

# MIX1016 Hydrogen Sulfide Gas Sensor

Version No.:1.5

## Features:

- \* High sensitivity
- \* Low power consumption
- \* Long life and low cost
- \* Fast response and recovery

## Application:

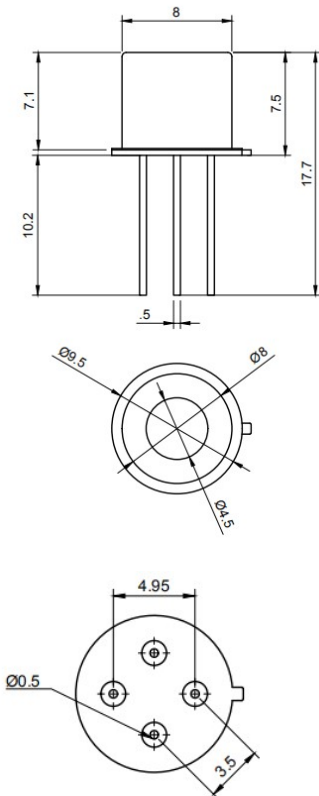
- \* Domestic gas leakage detectors
- \* Portable gas detectors

The sensing material of MIX1016 is tin dioxide SnO<sub>2</sub>, which has low conductivity in clean air. When the combustible gas exists, the conductivity of the sensor will be raised according to the gas concentration goes up. Through a simple circuit, to convert the changes of conductivity to correspond to the gas concentration.



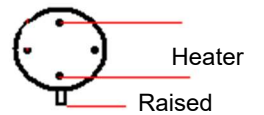
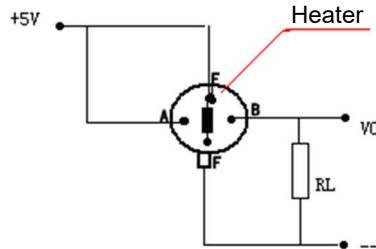
MIX1016 has high sensitivity to Hydrogen Sulfide. The sensor can work in high temperature. It is low cost sensor and can be used in different applications.

## Structure and Dimensions:



Unit: mm

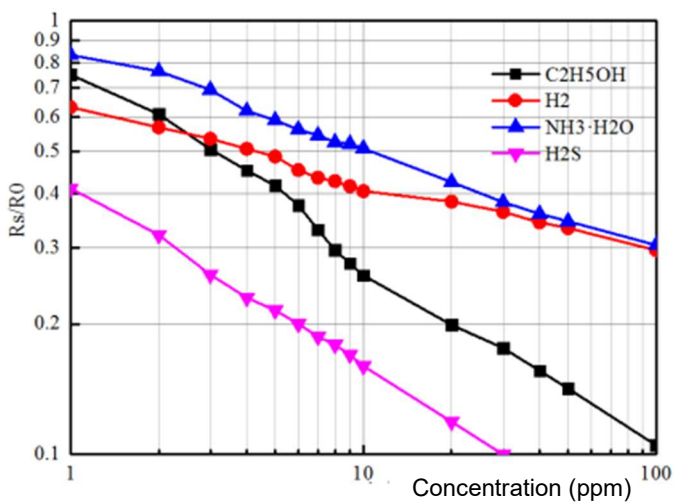
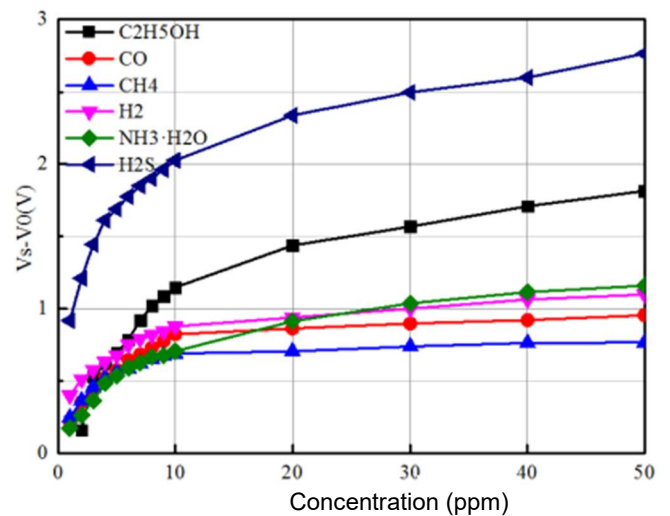
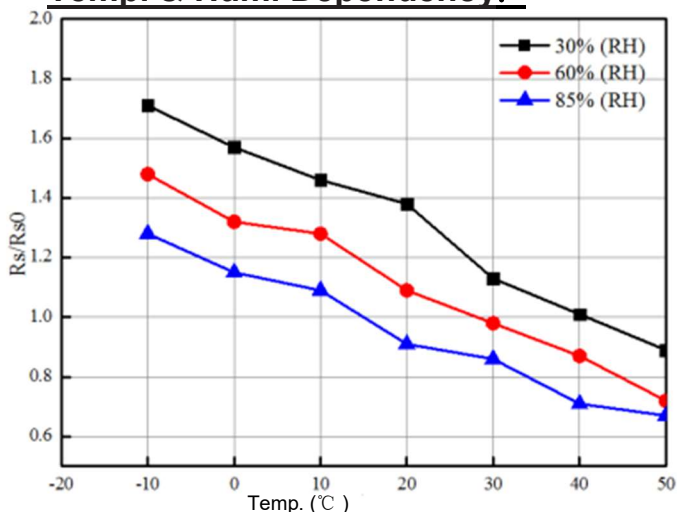
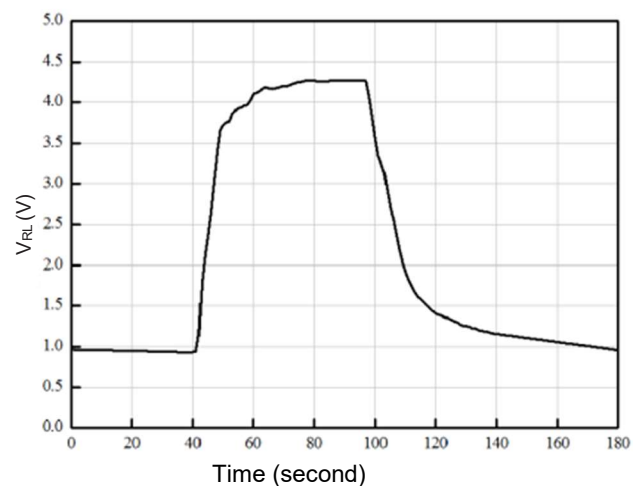
## Test Circuit:



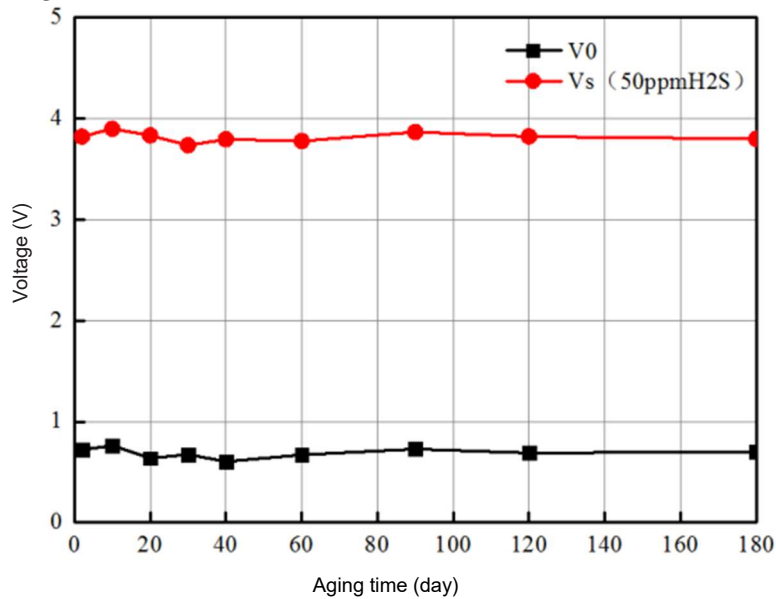
Item	Description
5V	Voltage for heating and measuring
V <sub>o</sub>	Output voltage
R <sub>L</sub>	Load resistor (1 to 20K adjustment)
Raised	Horizontal to the raised is Heater

**Specification:**

Item	Specification
Target Gas	Hydrogen Sulfide
Detecting Range	0~50ppm(H <sub>2</sub> S)
Heater Voltage(V <sub>H</sub> )	5.0V±0.1V AC or DC
Loop Voltage	≤24V DC
Heater Resistor(R <sub>H</sub> )	55 Ω ± 3 Ω (Room Temp.)
Power consumption(P <sub>H</sub> )	≤300mW
Sensitivity	R <sub>s</sub> (in air)/R <sub>s</sub> (50ppm H <sub>2</sub> S) ≥ 5
Output Voltage(V <sub>s</sub> )	≥0.5 V(In 50ppm H <sub>2</sub> S)
Concentration Slope	≤0.6 (R <sub>100</sub> ppm/R <sub>20</sub> ppm H <sub>2</sub> S)
Testing condition	20±2℃, 65%±5%RH 21%, no less than 18%
Oxygen concentration in used place	If used in low oxygen concentration, please contact for detail
Life Expectancy	5 years

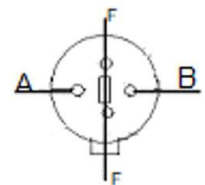
**Sensitivity Characteristics:**

**Linear Diagram:**

**Temp. & Hum. Dependency:**

**Response and Recovery:**


### Long-term Stability:



### Cautions:

- Forbidden exposed the sensor in the organic silicon steam. Sensing material will lose sensitivity and never recover if the sensor absorbs organic silicon steam. The sensor must avoid exposing to silicon bond, fixture, and silicon latex, putty or plastic contain silicon environment.
- Forbidden exposed the sensor in high corrosive gas. If the sensor was exposed to high concentration corrosive gas (e.g.  $H_2S$ ,  $SO_x$ ,  $Cl_2$ ,  $HCl$  etc.), it will not only result in corrosion of sensor's structure, also it cause sincere sensitivity attenuation.
- Forbidden contact to Alkali, Alkali metals salt, halogen pollution. The performance will be changed badly if sensor was polluted by alkali metals salt especially brine, or be exposed to halogen e.g. fluorine.
- No-contact with the water. No icing on the surface of the sensor.
- Don't apply with high voltage. When the sensor applied voltage cannot be higher than stipulated value, even if the sensor is not physically damaged or broken, it causes down-line or heater damaged, and bring on sensors' sensitivity characteristic changed badly.
- Forbidden supply wrong voltage in different pins. Connected the sensor according to the photos show in the right side
- Avoid condensation water on the surface of the sensor. Indoor conditions, slight condensation water will influence sensors' performance lightly. However, if condensation water on sensors surface and keep a certain period, sensors' sensitive will be decreased.
- Avoid using the sensor in high gas concentration. No matter the sensor is electrified or not, if it is placed in high gas concentration for long time, sensors characteristic will be affected. If lighter gas sprays the sensor, it will cause extremely damage.
- Avoid store the sensor for long time. The sensor's resistance will drift reversibly if it's stored for long



AA-BB: Measuring electrodes  
 A-B: Measuring electrodes  
 F-F: Heater electrodes

time without electrify, this drift is related with storage conditions. Sensor should be stored in airproof bag without volatile silicon compound. For the sensor with long time

10. storage but no electrify, they need long aging time for stability before using. The suggested aging time as follow:

Storage time	Recommend aging time
Less than 1 month	No less than 48 hours
1~6 months	No less than 72 hours
Over 6 months	No less than 168 hours

11. Avoid exposed the sensor in adverse environment for long time. No matter the sensor electrified or not, if exposed to in adverse environment for long time, e.g. high humidity, high temperature, high pollution etc., it will influence the sensors' performance badly.
12. Avoid vibration and concussion the sensor. If continual vibration the sensors, the down-lead will be break. In transportation or assembling line, pneumatic screwdriver/ultrasonic welding machine can lead this vibration. If concussion the sensor badly, the lead wire will disconnected.
13. Operate the sensor under following condition:

**a. Handmade soldering conditions:**

Item	Condition
Soldering flux	Less chlorine
seaming iron	constant temperature
Temperature of seaming iron	250°C
Time of soldering	less than 3 seconds

**b. Wave-soldering conditions:**

Note: Getting through the soldering machine by once

Item	Condition
Soldering flux	Less chlorine
Speed	1-2 Meter/ Minute
Warm-up temperature	100±20°C
Soldering temperature	250±10°C

If does not following above operation terms, the sensor's sensitivity will be decreased.

**Shenzhen Mixsen Electronics Co., Ltd**  
 Add.: 4A, No. B Building, Dalangyongtai Industrial Park, Huawang Road, Longhua District, Shenzhen, Guangdong, China  
 Post: 518000  
 Tel: 86-755-86635585  
 Email: sales@mixsen.com  
 Website: www.mixsensensors.com